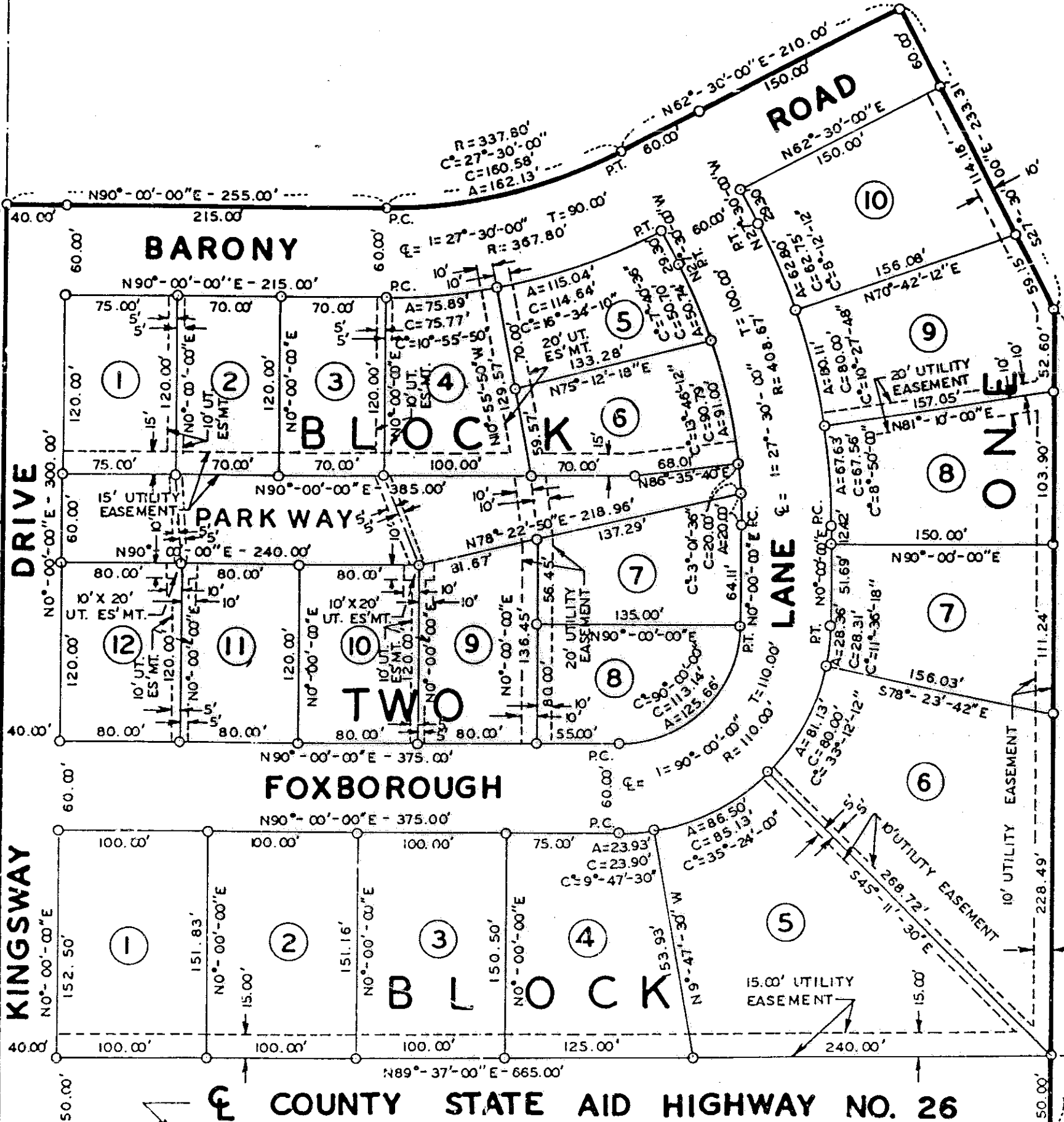


WEST LINE - WEST 1/2 - S.E. 1/4 - SEC. 36 - T112N - R26W

WEST LINE - WEST 1/2 - S.E. 1/4 - SEC. 36 - T112N - R26W

S.W. CORNER WEST 1/2 - S.E. 1/4 SEC. 35 - T112N - R26W



DRIVE

BARONY

BLOCK

PARKWAYS

TWO

FOXBOROUGH

BLOCK

ROAD

LANE

COUNTY STATE AID HIGHWAY NO. 26